

作品リスト

List of Works

図録番号

名称

年代

出土

寸法 重量

所蔵(館蔵番号)

No.

Title

Date

Site

Owner (Accession No.)

h: 高さ height

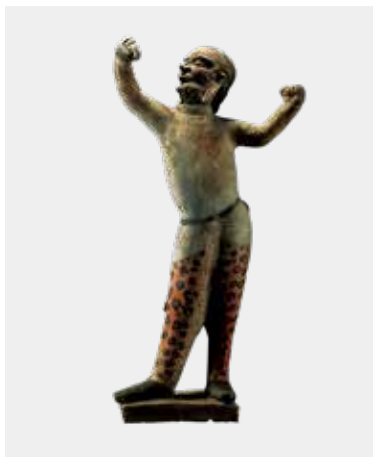
d: 径 diameter

w: 幅 width

l: 長さ length

t: 厚さ thickness

Weight: 重量



1

かさいこじんよう
加彩胡人俑

唐開元18(730)年
甘肅省慶城県穆泰墓出土
h: 50.0cm Weight: 3,470g
慶城県博物館(館蔵番号0012)

**Figure of a Hu Man
Earthenware with painted decoration**

18th year of the Kaiyuan era (730), Tang dynasty
Excavated from the tomb of Mu Tai
at Qingcheng County, Gansu Province
Qingcheng County Museum (Accession No.0012)



2

かさいこじんよう
加彩胡人俑

唐開元18(730)年
甘肅省慶城県穆泰墓出土
h: 50.0cm Weight: 4,701g
慶城県博物館(館蔵番号0011)

**Figure of a Hu Man
Earthenware with painted decoration**

18th year of the Kaiyuan era (730), Tang dynasty
Excavated from the tomb of Mu Tai
at Qingcheng County, Gansu Province
Qingcheng County Museum (Accession No.0011)



3

かさいこじんよう
加彩胡人俑

唐開元18(730)年
甘肅省慶城県穆泰墓出土
h: 54.0cm Weight: 4,105g
慶城県博物館(館蔵番号0008)

**Figure of a Hu Man
Earthenware with painted decoration**

18th year of the Kaiyuan era (730), Tang dynasty
Excavated from the tomb of Mu Tai
at Qingcheng County, Gansu Province
Qingcheng County Museum (Accession No.0008)



4

かさいこじんよう
加彩胡人俑

唐開元18(730)年
甘肅省慶城県穆泰墓出土
h: 53.0cm Weight: 4,315g
慶城県博物館(館蔵番号0003)

**Figure of a Hu Man
Earthenware with painted decoration**

18th year of the Kaiyuan era (730), Tang dynasty
Excavated from the tomb of Mu Tai
at Qingcheng County, Gansu Province
Qingcheng County Museum (Accession No.0003)



5

かさいこじんよう
加彩胡人俑

唐開元18(730)年
甘肅省慶城県穆泰墓出土
h: 47.0cm Weight: 3,127g
慶城県博物館(館蔵番号0005)

**Figure of a *Hu* Man
Earthenware with painted decoration**

18th year of the Kaiyuan era (730), Tang dynasty
Excavated from the tomb of Mu Tai
at Qingcheng County, Gansu Province
Qingcheng County Museum (Accession No.0005)



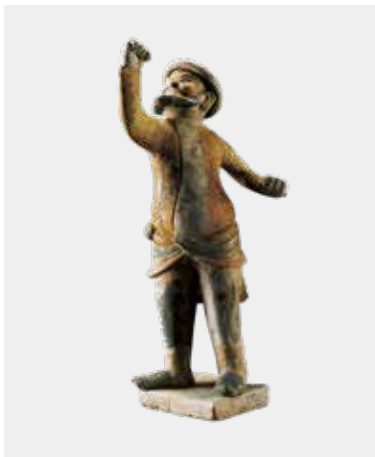
6

かさいこじんよう かさいらくだ
加彩胡人俑・加彩駱駝

唐開元18(730)年
甘肅省慶城県穆泰墓出土
(俑)(Figure) h: 53.0cm Weight: 4,325g
(駱駝)(Camel) h: 77.0cm Weight: 18,136g
慶城県博物館(館蔵番号0014)

**Figure of a *Hu* Man and a Camel
Earthenware with painted decoration**

18th year of the Kaiyuan era (730), Tang dynasty
Excavated from the tomb of Mu Tai
at Qingcheng County, Gansu Province
Qingcheng County Museum (Accession No.0014)



7

かさいこじんよう
加彩胡人俑

唐開元18(730)年
甘肅省慶城県穆泰墓出土
h: 44.2cm Weight: 3,719g
慶城県博物館(館蔵番号0019)

**Figure of a *Hu* Man
Earthenware with painted decoration**

18th year of the Kaiyuan era (730), Tang dynasty
Excavated from the tomb of Mu Tai
at Qingcheng County, Gansu Province
Qingcheng County Museum (Accession No.0019)



8

かさいこじんよう
加彩胡人俑

唐開元18(730)年
甘肅省慶城県穆泰墓出土
h: 33.0cm Weight: 1,617g
慶城県博物館(館蔵番号0023)

**Figure of a *Hu* Man
Earthenware with painted decoration**

18th year of the Kaiyuan era (730), Tang dynasty
Excavated from the tomb of Mu Tai
at Qingcheng County, Gansu Province
Qingcheng County Museum (Accession No.0023)



9

かさいこじんよう
加彩胡人俑

唐開元18(730)年
甘肅省慶城縣穆泰墓出土
h: 43.0cm Weight: 2,602g
慶城縣博物館(館藏番号0007)

**Figure of a *Hu* Man
Earthenware with painted decoration**

18th year of the Kaiyuan era (730), Tang dynasty
Excavated from the tomb of Mu Tai
at Qingcheng County, Gansu Province
Qingcheng County Museum (Accession No.0007)



10

かさいこじんよう
加彩胡人俑

唐開元18(730)年
甘肅省慶城縣穆泰墓出土
h: 33.0cm Weight: 1,600g
慶城縣博物館(館藏番号0026)

**Figure of a *Hu* Man
Earthenware with painted decoration**

18th year of the Kaiyuan era (730), Tang dynasty
Excavated from the tomb of Mu Tai
at Qingcheng County, Gansu Province
Qingcheng County Museum (Accession No.0026)



11

かさいこじんよう
加彩胡人俑

唐開元18(730)年
甘肅省慶城縣穆泰墓出土
h: 38.5cm Weight: 2,514g
慶城縣博物館(館藏番号0024)

**Figure of a *Hu* Man
Earthenware with painted decoration**

18th year of the Kaiyuan era (730), Tang dynasty
Excavated from the tomb of Mu Tai
at Qingcheng County, Gansu Province
Qingcheng County Museum (Accession No.0024)



12

かさいらくだ
加彩駱駝

唐開元18(730)年
甘肅省慶城縣穆泰墓出土
h: 58.0cm l: 43.0cm Weight: 7,700g
慶城縣博物館(館藏番号0027)

**Figure of a Camel
Earthenware with painted decoration**

18th year of the Kaiyuan era (730), Tang dynasty
Excavated from the tomb of Mu Tai
at Qingcheng County, Gansu Province
Qingcheng County Museum (Accession No.0027)



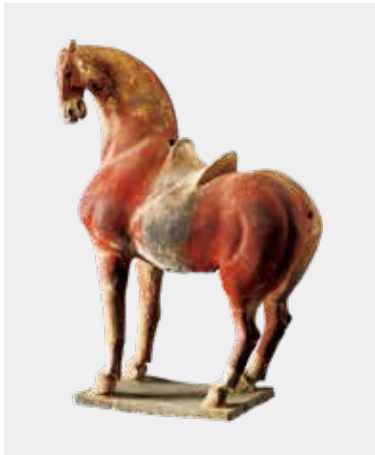
13

かさいらくだ
加彩駱駝

唐開元18(730)年
甘肅省慶城縣穆泰墓出土
h: 75.0cm l: 58.0cm Weight: 18,750g
慶城縣博物館(館藏番号0028)

**Figure of a Camel
Earthenware with painted decoration**

18th year of the Kaiyuan era (730), Tang dynasty
Excavated from the tomb of Mu Tai
at Qingcheng County, Gansu Province
Qingcheng County Museum (Accession No.0028)



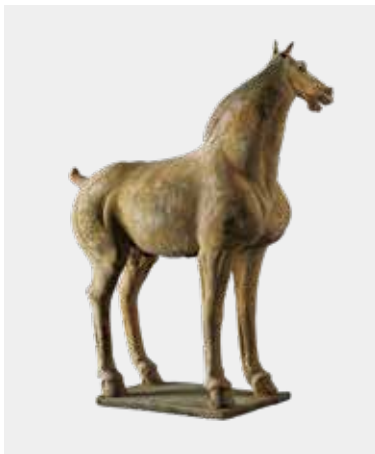
14

かさいうま
加彩馬

唐開元18(730)年
甘肅省慶城縣穆泰墓出土
h: 48.8cm l: 34.0cm Weight: 6,000g
慶城縣博物館(館藏番号0032)

**Figure of a Horse
Earthenware with painted decoration**

18th year of the Kaiyuan era (730), Tang dynasty
Excavated from the tomb of Mu Tai
at Qingcheng County, Gansu Province
Qingcheng County Museum (Accession No.0032)



15

かさいうま
加彩馬

唐開元18(730)年
甘肅省慶城縣穆泰墓出土
h: 64.0cm l: 55.0cm Weight: 15,643g
慶城縣博物館(館藏番号0029)

**Figure of a Horse
Earthenware with painted decoration**

18th year of the Kaiyuan era (730), Tang dynasty
Excavated from the tomb of Mu Tai
at Qingcheng County, Gansu Province
Qingcheng County Museum (Accession No.0029)



16

かさいうま
加彩馬

唐開元18(730)年
甘肅省慶城縣穆泰墓出土
h: 47.5cm l: 37.0cm Weight: 5,800g
慶城縣博物館(館藏番号0033)

**Figure of a Horse
Earthenware with painted decoration**

18th year of the Kaiyuan era (730), Tang dynasty
Excavated from the tomb of Mu Tai
at Qingcheng County, Gansu Province
Qingcheng County Museum (Accession No.0033)



17

かさいじょう
加彩女俑

唐開元18(730)年
甘肅省慶城縣穆泰墓出土
h: 40.5cm Weight: 2,434g
慶城縣博物館(館藏番号0009)

**Figure of a Lady
Earthenware with painted decoration**

18th year of the Kaiyuan era (730), Tang dynasty
Excavated from the tomb of Mu Tai
at Qingcheng County, Gansu Province
Qingcheng County Museum (Accession No.0009)



18

かさいじょう
加彩女俑

唐開元18(730)年
甘肅省慶城縣穆泰墓出土
h: 43.0cm Weight: 3,414g
慶城縣博物館(館藏番号0006)

**Figure of a Lady
Earthenware with painted
and gilt decoration**

18th year of the Kaiyuan era (730), Tang dynasty
Excavated from the tomb of Mu Tai
at Qingcheng County, Gansu Province
Qingcheng County Museum (Accession No.0006)



19

かさいじょう
加彩女俑

唐開元18(730)年
甘肅省慶城縣穆泰墓出土
h: 46.0cm Weight: 2,832g
慶城縣博物館(館藏番号0013)

**Figure of a Lady
Earthenware with painted
and gilt decoration**

18th year of the Kaiyuan era (730), Tang dynasty
Excavated from the tomb of Mu Tai
at Qingcheng County, Gansu Province
Qingcheng County Museum (Accession No.0013)



20

かさいじょう
加彩女俑

唐開元18(730)年
甘肅省慶城縣穆泰墓出土
h: 41.2cm Weight: 2,236g
慶城縣博物館(館藏番号0010)

**Figure of a Lady
Earthenware with painted decoration**

18th year of the Kaiyuan era (730), Tang dynasty
Excavated from the tomb of Mu Tai
at Qingcheng County, Gansu Province
Qingcheng County Museum (Accession No.0010)



21

かさいこじんよう
加彩胡人俑

唐開元18(730)年
甘肅省慶城県穆泰墓出土
h: 48.0cm Weight: 3,847g
慶城県博物館(館蔵番号0004)

**Figure of a *Hu* Man
Earthenware with painted decoration**

18th year of the Kaiyuan era (730), Tang dynasty
Excavated from the tomb of Mu Tai
at Qingcheng County, Gansu Province
Qingcheng County Museum (Accession No.0004)



22

かさいこじんよう
加彩胡人俑

唐開元18(730)年
甘肅省慶城県穆泰墓出土
h: 59.0cm Weight: 8,181g
慶城県博物館(館蔵番号0195)

**Figure of a *Hu* Man
Earthenware with painted decoration**

18th year of the Kaiyuan era (730), Tang dynasty
Excavated from the tomb of Mu Tai
at Qingcheng County, Gansu Province
Qingcheng County Museum (Accession No.0195)



23

かさいこじんよう
加彩胡人俑

唐開元18(730)年
甘肅省慶城県穆泰墓出土
h: 38.8cm Weight: 3,210g
慶城県博物館(館蔵番号0194)

**Figure of a *Hu* Man
Earthenware with painted decoration**

18th year of the Kaiyuan era (730), Tang dynasty
Excavated from the tomb of Mu Tai
at Qingcheng County, Gansu Province
Qingcheng County Museum (Accession No.0194)



24

かさいこじんよう
加彩胡人俑

唐開元18(730)年
甘肅省慶城県穆泰墓出土
h: 38.5cm Weight: 2,879g
慶城県博物館(館蔵番号0025)

**Figure of a *Hu* Man
Earthenware with painted decoration**

18th year of the Kaiyuan era (730), Tang dynasty
Excavated from the tomb of Mu Tai
at Qingcheng County, Gansu Province
Qingcheng County Museum (Accession No.0025)



25

かさいこじんよう
加彩胡人俑

唐開元18(730)年
甘肅省慶城縣穆泰墓出土
h: 39.5cm Weight: 2,100g
慶城縣博物館(館藏番号0020)

**Figure of a *Hu* Man
Earthenware with painted decoration**

18th year of the Kaiyuan era (730), Tang dynasty
Excavated from the tomb of Mu Tai
at Qingcheng County, Gansu Province
Qingcheng County Museum (Accession No.0020)



26

かさいじょよう
加彩女俑

唐開元18(730)年
甘肅省慶城縣穆泰墓出土
h: 42.0cm Weight: 2,400g
慶城縣博物館(館藏番号0021)

**Figure of a Lady
Earthenware with painted decoration**

18th year of the Kaiyuan era (730), Tang dynasty
Excavated from the tomb of Mu Tai
at Qingcheng County, Gansu Province
Qingcheng County Museum (Accession No.0021)



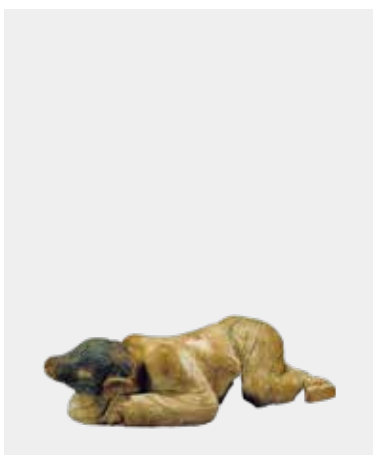
27

かさいじょよう
加彩女俑

唐開元18(730)年
甘肅省慶城縣穆泰墓出土
h: 35.6cm Weight: 2,000g
慶城縣博物館(館藏番号0022)

**Figure of a Lady
Earthenware with painted decoration**

18th year of the Kaiyuan era (730), Tang dynasty
Excavated from the tomb of Mu Tai
at Qingcheng County, Gansu Province
Qingcheng County Museum (Accession No.0022)



28

かさいきはいうよう
加彩跪拜俑

唐開元18(730)年
甘肅省慶城縣穆泰墓出土
h: 10.3cm l: 41.2cm Weight: 4,100g
慶城縣博物館(館藏番号0196)

**Figure of a Man Kneeling Down
and Worshipping
Earthenware with painted decoration**

18th year of the Kaiyuan era (730), Tang dynasty
Excavated from the tomb of Mu Tai
at Qingcheng County, Gansu Province
Qingcheng County Museum (Accession No.0196)

29/35

かさいじょう
加彩女俑

唐開元18(730)年
甘肅省慶城縣穆泰墓出土

Figure of a Lady
Earthenware with painted decoration

18th year of the Kaiyuan era (730), Tang dynasty
Excavated from the tomb of Mu Tai
at Qingcheng County, Gansu Province

30 - 34

かさいこじんよう
加彩胡人俑

唐開元18(730)年
甘肅省慶城縣穆泰墓出土

Figure of a *Hu* Man
Earthenware with painted decoration

18th year of the Kaiyuan era (730), Tang dynasty
Excavated from the tomb of Mu Tai
at Qingcheng County, Gansu Province

29

h: 9.5cm Weight: 60g
慶城縣博物館(館藏番号1408)

Qingcheng County Museum
(Accession No.1408)

30

h: 11.6cm Weight: 85g
慶城縣博物館(館藏番号1409)

Qingcheng County Museum
(Accession No.1409)

31

h: 11.2cm Weight: 75g
慶城縣博物館(館藏番号1413)

Qingcheng County Museum
(Accession No.1413)

32

h: 11.0cm Weight: 75g
慶城縣博物館(館藏番号1412)

Qingcheng County Museum
(Accession No.1412)

33

h: 10.6cm Weight: 70g
慶城縣博物館(館藏番号1410)

Qingcheng County Museum
(Accession No.1410)

34

h: 10.5cm Weight: 70g
慶城縣博物館(館藏番号1411)

Qingcheng County Museum
(Accession No.1411)

35

h: 10.8cm Weight: 65g
慶城縣博物館(館藏番号1407)

Qingcheng County Museum
(Accession No.1407)



36 - 44

かさいこじんよう
加彩胡人俑

唐開元18(730)年
甘肅省慶城県穆泰墓出土

**Figure of a *Hu* Man
Earthenware with painted decoration**

18th year of the Kaiyuan era (730), Tang dynasty
Excavated from the tomb of Mu Tai
at Qingcheng County, Gansu Province

36

h: 16.5cm Weight: 340g
慶城県博物館(館藏番号0048)

Qingcheng County Museum
(Accession No.0048)

37

h: 16.8cm Weight: 340g
慶城県博物館(館藏番号0053)

Qingcheng County Museum
(Accession No.0053)

38

h: 17.0cm Weight: 340g
慶城県博物館(館藏番号0051)

Qingcheng County Museum
(Accession No.0051)

39

h: 17.0cm Weight: 340g
慶城県博物館(館藏番号0049)

Qingcheng County Museum
(Accession No.0049)

40

h: 17.0cm Weight: 340g
慶城県博物館(館藏番号0054)

Qingcheng County Museum
(Accession No.0054)

41

h: 17.1cm Weight: 340g
慶城県博物館(館藏番号0055)

Qingcheng County Museum
(Accession No.0055)

42

h: 17.0cm Weight: 340g
慶城県博物館(館藏番号0056)

Qingcheng County Museum
(Accession No.0056)

43

h: 16.8cm Weight: 340g
慶城県博物館(館藏番号0050)

Qingcheng County Museum
(Accession No.0050)

44

h: 17.3cm Weight: 340g
慶城県博物館(館藏番号0052)

Qingcheng County Museum
(Accession No.0052)



45

かさいこじんようとうぶ
加彩胡人俑頭部

唐開元18(730)年
甘肅省慶城縣穆泰墓出土
h: 10.5cm w: 9.5cm Weight: 525g
慶城縣博物館(館藏番号0079)

**Head of a *Hu* Figure
Earthenware with painted decoration**

18th year of the Kaiyuan era (730), Tang dynasty
Excavated from the tomb of Mu Tai
at Qingcheng County, Gansu Province
Qingcheng County Museum (Accession No.0079)

46

かさいこじんようとうぶ
加彩胡人俑頭部

唐開元18(730)年
甘肅省慶城縣穆泰墓出土
h: 7.0cm w: 4.4cm Weight: 120g
慶城縣博物館(館藏番号0076)

**Head of a *Hu* Figure
Earthenware with painted decoration**

18th year of the Kaiyuan era (730), Tang dynasty
Excavated from the tomb of Mu Tai
at Qingcheng County, Gansu Province
Qingcheng County Museum (Accession No.0076)

47

かさいじょようとうぶ
加彩女俑頭部

唐開元18(730)年
甘肅省慶城縣穆泰墓出土
h: 7.0cm w: 4.4cm Weight: 120g
慶城縣博物館(館藏番号0075)

**Head of a Lady Figure
Earthenware with painted decoration**

18th year of the Kaiyuan era (730), Tang dynasty
Excavated from the tomb of Mu Tai
at Qingcheng County, Gansu Province
Qingcheng County Museum (Accession No.0075)



48

かさいじょようとうぶ
加彩女俑頭部

唐開元18(730)年
甘肅省慶城縣穆泰墓出土
h: 10.0cm w: 5.7cm Weight: 175g
慶城縣博物館(館藏番号0063)

**Head of a Lady Figure
Earthenware with painted decoration**

18th year of the Kaiyuan era (730), Tang dynasty
Excavated from the tomb of Mu Tai
at Qingcheng County, Gansu Province
Qingcheng County Museum (Accession No.0063)

49

かさいじょようとうぶ
加彩女俑頭部

唐開元18(730)年
甘肅省慶城縣穆泰墓出土
h: 7.2cm w: 6.0cm Weight: 150g
慶城縣博物館(館藏番号0067)

**Head of a Lady Figure
Earthenware with painted decoration**

18th year of the Kaiyuan era (730), Tang dynasty
Excavated from the tomb of Mu Tai
at Qingcheng County, Gansu Province
Qingcheng County Museum (Accession No.0067)

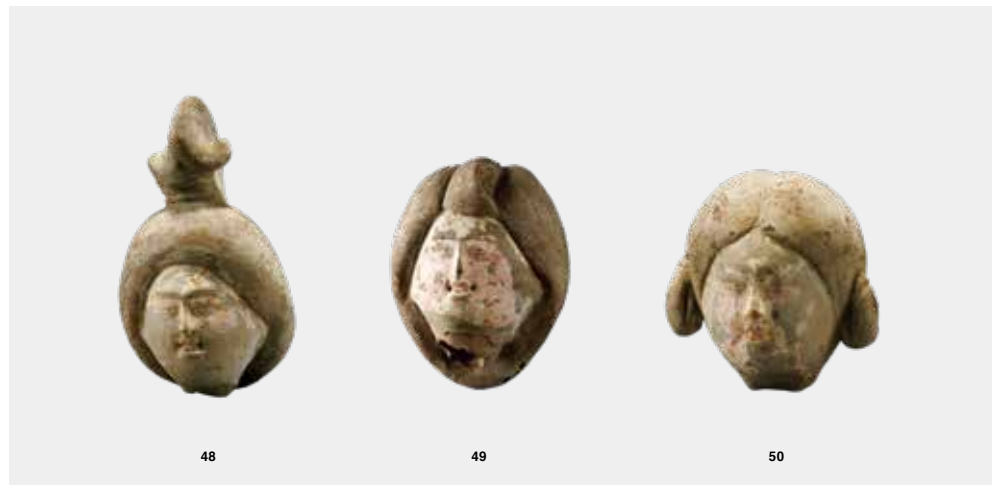
50

かさいじょようとうぶ
加彩女俑頭部

唐開元18(730)年
甘肅省慶城縣穆泰墓出土
h: 6.0cm w: 6.0cm Weight: 130g
慶城縣博物館(館藏番号0070)

**Head of a Lady Figure
Earthenware with painted decoration**

18th year of the Kaiyuan era (730), Tang dynasty
Excavated from the tomb of Mu Tai
at Qingcheng County, Gansu Province
Qingcheng County Museum (Accession No.0070)



51

かさいうし
加彩牛

唐開元18(730)年
甘肅省慶城県穆泰墓出土
h: 9.5cm l: 10.0cm Weight: 340g
慶城県博物館(館藏番号1547)

**Figure of an Ox
Earthenware with painted decoration**

18th year of the Kaiyuan era (730), Tang dynasty
Excavated from the tomb of Mu Tai
at Qingcheng County, Gansu Province
Qingcheng County Museum (Accession No.1547)

52

かさいうし
加彩牛

唐開元18(730)年
甘肅省慶城県穆泰墓出土
h: 4.5cm l: 4.0cm Weight: 45g
慶城県博物館(館藏番号1548)

**Figure of an Ox
Earthenware with painted decoration**

18th year of the Kaiyuan era (730), Tang dynasty
Excavated from the tomb of Mu Tai
at Qingcheng County, Gansu Province
Qingcheng County Museum (Accession No.1548)

53

かさいうし
加彩牛

唐開元18(730)年
甘肅省慶城県穆泰墓出土
h: 12.0cm l: 17.0cm Weight: 410g
慶城県博物館(館藏番号1546)

**Figure of an Ox
Earthenware with painted decoration**

18th year of the Kaiyuan era (730), Tang dynasty
Excavated from the tomb of Mu Tai
at Qingcheng County, Gansu Province
Qingcheng County Museum (Accession No.1546)

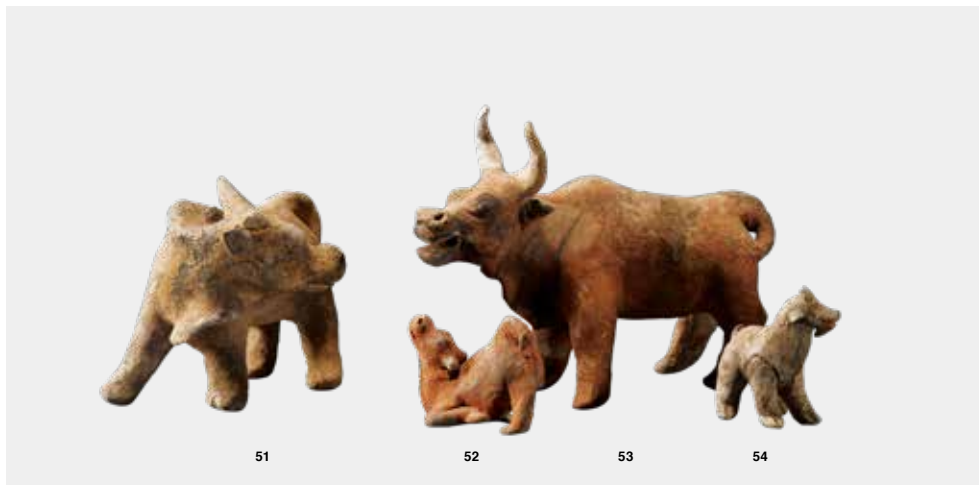
54

かさいやぎ
加彩山羊

唐開元18(730)年
甘肅省慶城県穆泰墓出土
h: 5.7cm l: 5.5cm Weight: 40g
慶城県博物館(館藏番号1549)

**Figure of a Goat
Earthenware with painted decoration**

18th year of the Kaiyuan era (730), Tang dynasty
Excavated from the tomb of Mu Tai
at Qingcheng County, Gansu Province
Qingcheng County Museum (Accession No.1549)



55

かさい やぎ
加彩山羊

唐開元18(730)年
甘肅省慶城縣穆泰墓出土
h: 6.5cm l: 9.0cm Weight: 115g
慶城縣博物館(館藏番号0081)

**Figure of a Goat
Earthenware with painted decoration**

18th year of the Kaiyuan era (730), Tang dynasty
Excavated from the tomb of Mu Tai
at Qingcheng County, Gansu Province
Qingcheng County Museum (Accession No.0081)

56

かさい やぎ
加彩山羊

唐開元18(730)年
甘肅省慶城縣穆泰墓出土
h: 7.5cm l: 9.0cm Weight: 110g
慶城縣博物館(館藏番号0080)

**Figure of a Goat
Earthenware with painted decoration**

18th year of the Kaiyuan era (730), Tang dynasty
Excavated from the tomb of Mu Tai
at Qingcheng County, Gansu Province
Qingcheng County Museum (Accession No.0080)

57

かさい やぎ
加彩山羊

唐開元18(730)年
甘肅省慶城縣穆泰墓出土
h: 8.5cm l: 9.5cm Weight: 125g
慶城縣博物館(館藏番号1550)

**Figure of a Goat
Earthenware with painted decoration**

18th year of the Kaiyuan era (730), Tang dynasty
Excavated from the tomb of Mu Tai
at Qingcheng County, Gansu Province
Qingcheng County Museum (Accession No.1550)

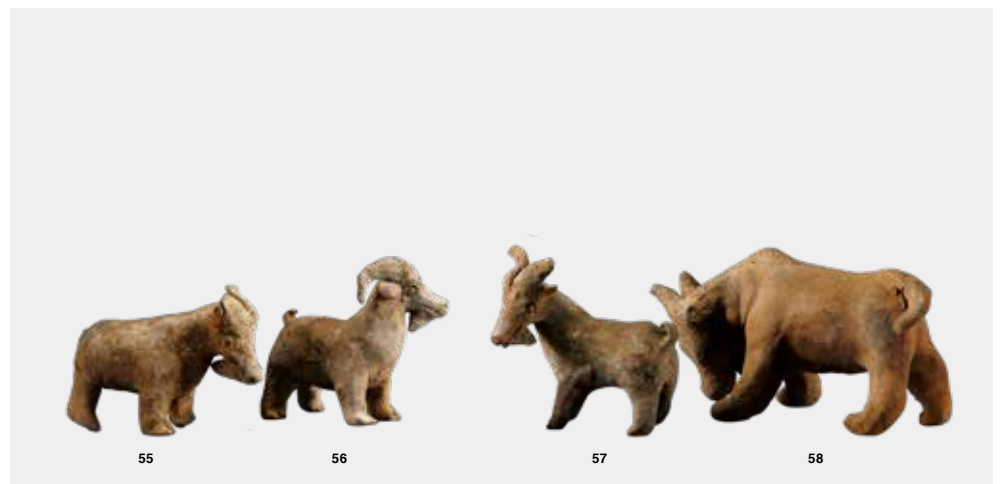
58

かさいうし
加彩牛

唐開元18(730)年
甘肅省慶城縣穆泰墓出土
h: 8.3cm l: 15.0cm Weight: 395g
慶城縣博物館(館藏番号1545)

**Figure of an Ox
Earthenware with painted decoration**

18th year of the Kaiyuan era (730), Tang dynasty
Excavated from the tomb of Mu Tai
at Qingcheng County, Gansu Province
Qingcheng County Museum (Accession No.1545)





59

ずいちようこんちゅうもんほちりようきよう
瑞鳥昆虫文八稜鏡

唐開元18(730)年
甘肅省慶城県穆泰墓出土
d: 10.5cm t: 0.45cm Weight: 310g
慶城県博物館(館藏番号1381)

**Octafoil Mirror
Bronze, design of
auspicious birds and insects**

18th year of the Kaiyuan era (730), Tang dynasty
Excavated from the tomb of Mu Tai
at Qingcheng County, Gansu Province
Qingcheng County Museum (Accession No.1381)



60

ぼくたいぼし
穆泰墓誌

唐開元18(730)年
甘肅省慶城県穆泰墓出土
h: 10.0cm w: 36.0cm×36.0cm Weight: 11,166g
慶城県博物館(館藏番号0035)

**Epitaph of the Tomb of Mu Tai
Earthenware with inscription of Chinese
characters and painted decoration**

18th year of the Kaiyuan era (730), Tang dynasty
Excavated from the tomb of Mu Tai
at Qingcheng County, Gansu Province
Qingcheng County Museum (Accession No.0035)