

Special Exhibition "Lucie Rie : A Retrospective"

Discount Coupon Please print out this coupon and present it at the museum reception, and you will get an admission ticket at the discount rate listed below. Both color and black-and-white prints are acceptable.

General admission 900yen → 720yen
University & high school students 540yen → 450yen

Dates : Sat. Dec. 11, 2010 – Sun. Feb. 13, 2011

Closed days : Mondays (open on Jan.10), New Year's Holidays (Tue.Dec.28 – Tue. Jan.4) and Tue. Jan.11

Opening hours: from 9:30 am to 5:00 pm

*Open until 7:00 pm during the main performance of the event

Osaka Hikari Renaissance 2010 (from Sat. Dec. 11 to Sat. Dec. 25)

*Last admission: 30 minutes prior to closing time

※ Valid for one-time admission of up to two persons.

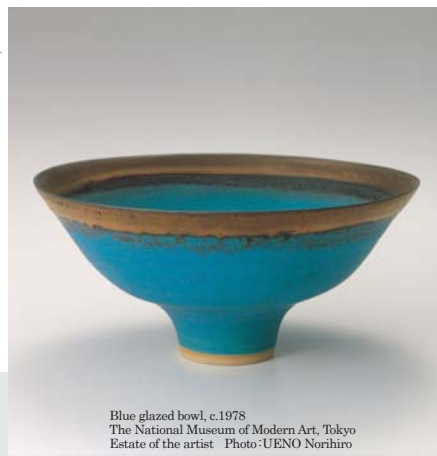
※ This coupon may not be combined with other offerings or discount vouchers.

※ University and high school students are requested to show their student IDs.

The Museum of Oriental Ceramics, Osaka

1-1-26, Nakanoshima, Kita-ku, Osaka 530-0005

tel.06-6223-0055 fax.06-6223-0057



Blue glazed bowl, c.1978
The National Museum of Modern Art, Tokyo
Estate of the artist Photo:UENO Norihiro



Special Exhibition "Lucie Rie : A Retrospective"

Discount Coupon Please print out this coupon and present it at the museum reception, and you will get an admission ticket at the discount rate listed below. Both color and black-and-white prints are acceptable.

General admission 900yen → 720yen
University & high school students 540yen → 450yen

Dates : Sat. Dec. 11, 2010 – Sun. Feb. 13, 2011

Closed days : Mondays (open on Jan.10), New Year's Holidays (Tue.Dec.28 – Tue. Jan.4) and Tue. Jan.11

Opening hours: from 9:30 am to 5:00 pm

*Open until 7:00 pm during the main performance of the event

Osaka Hikari Renaissance 2010 (from Sat. Dec. 11 to Sat. Dec. 25)

*Last admission: 30 minutes prior to closing time

※ Valid for one-time admission of up to two persons.

※ This coupon may not be combined with other offerings or discount vouchers.

※ University and high school students are requested to show their student IDs.

The Museum of Oriental Ceramics, Osaka

1-1-26, Nakanoshima, Kita-ku, Osaka 530-0005

tel.06-6223-0055 fax.06-6223-0057



Bowl decorated with pink lines, c.1980
Private collection Estate of the artist Photo:UENO Norihiro



Special Exhibition "Lucie Rie : A Retrospective"

Discount Coupon Please print out this coupon and present it at the museum reception, and you will get an admission ticket at the discount rate listed below. Both color and black-and-white prints are acceptable.

General admission 900yen → 720yen
University & high school students 540yen → 450yen

Dates : Sat. Dec. 11, 2010 – Sun. Feb. 13, 2011

Closed days : Mondays (open on Jan.10), New Year's Holidays (Tue.Dec.28 – Tue. Jan.4) and Tue. Jan.11

Opening hours: from 9:30 am to 5:00 pm

*Open until 7:00 pm during the main performance of the event

Osaka Hikari Renaissance 2010 (from Sat. Dec. 11 to Sat. Dec. 25)

*Last admission: 30 minutes prior to closing time

※ Valid for one-time admission of up to two persons.

※ This coupon may not be combined with other offerings or discount vouchers.

※ University and high school students are requested to show their student IDs.

The Museum of Oriental Ceramics, Osaka

1-1-26, Nakanoshima, Kita-ku, Osaka 530-0005

tel.06-6223-0055 fax.06-6223-0057



Vase decorated with lines (blue), c.1976
Private collection Estate of the artist Photo:Alan Tabor